

## #378 | Miss Priss Cabled Headband and Mittens

by Rebecca Hatcher



### Materials

Schaefer Yarn Miss Priss  
(100% merino wool, 4 oz  
[113 g] / 280 yds [256  
m]), 1 skein

Set of US size 7/4.5 mm  
double pointed needles,  
or size to obtain gauge

Set of US size 6/4 mm  
double pointed needles,  
or one size smaller than  
size needed to obtain  
gauge

Cable needle

1 stitch marker

Tapestry needle

### Finished Measurements

Mittens:

Hand length - 7.5 inches

Cuff length - 2.25 inches

Hand circumference - 7 inches

Headband:

Width - 2  $\frac{3}{4}$ " wide, desired circumference

**Gauge:** 24 sts and 32 rows/4 inches in seed stitch on  
larger ndls, after blocking

Cable chart (on ndl 1) will be 2 inches across

### Abbreviations

k2tog- knit two together

p2tog - purl two together

ssk - sl 2 sts knitwise one at a time, then k both tog  
through back loop

# #378 Miss Priss Cabled Headband and Mittens

(Page 2)



## Mittens

Using smaller ndls, CO 43 sts, divided as follows: 16 sts on ndl 1, 13 sts on ndl 2, 14 sts on ndl 3. Pm, and join into round, and beginning with round 1, work rounds 1-7 of Mitten Chart three times. On round 7 of the last rep, increase 1 st at the end of ndl 2, and finish the round: 44 sts, with 16 sts on ndl 1, 14 sts on ndl 2, and 14 sts on ndl 3.

Change to larger ndls and continue following chart.

### For Right Hand Thumb:

When work meas approximately 5 inches from CO edge, work first 19 sts in pattern as est, then work next 6 sts using scrap yarn. Sl these sts back to non-working ndl, then work them again using working yarn. Complete round as est and continue chart.

### For Left Hand Thumb:

When work meas approximately 5 inches from CO edge, work first 35 sts in pattern as est, then work next 6 sts using scrap yarn. Sl these sts back to non-working ndl, then work them again using working yarn. Complete round as est and continue chart.

### For Both Hands:

Continue in pattern until 2 sts from the end of round 49. These 2 sts will be cabled together with the first 2 sts of round 50 as follows: sl the 2 sts onto cn, and hold to back of work. K the first 2 sts from ndl 1. Then, using empty ndl, k the 2 sts from the cn, and continue round 50 as charted.

Continue working chart through round 62. On next round, work in seed st as est to 2 sts from the end of ndl 2. Sl these 2 sts, k2tog (these will be the first 2 sts on ndl 3), and pass the 2 slipped sts over. Finish the round in seed st. (41 sts rem)

Continue in seed st as est until mitten meas about  $\frac{3}{4}$  inches less than desired length. Sl last 2 sts from ndl 3 onto empty ndl, then work next 18 sts with this ndl and finish round. (20 sts on ndl 1, 21 sts total on ndls 2 and 3)

On next round, k1, p2tog, work to last 3 sts of ndl 1, k2tog, p1, k1, p2tog, work to last 3 sts of ndl 3, k2tog, p1. Rep this round until 17 sts rem. (8 on ndl 1, 9 total on ndls 2 and 3) Turn mitten inside out, and use 3 ndl BO to close top.

## Thumb

Remove scrap yarn and pick up 16 sts around opening (12 sts from scrap yarn, 2 sts on each side). Distribute these sts evenly on 3 ndls, and knit all rounds until thumb is desired length. On next round, k2tog across all sts. (8 sts rem)

Break yarn, thread through live sts, and pull tight to close. Weave in ends and block.

Make second mitten the same, taking care to place the thumb for the opposite hand.

## Headband

Using larger ndls, CO 22 sts. Beginning with row 1, work Headband Chart until piece meas 4 inches less than circumference of head. BO all sts and sew to CO edge. Weave in ends and block.

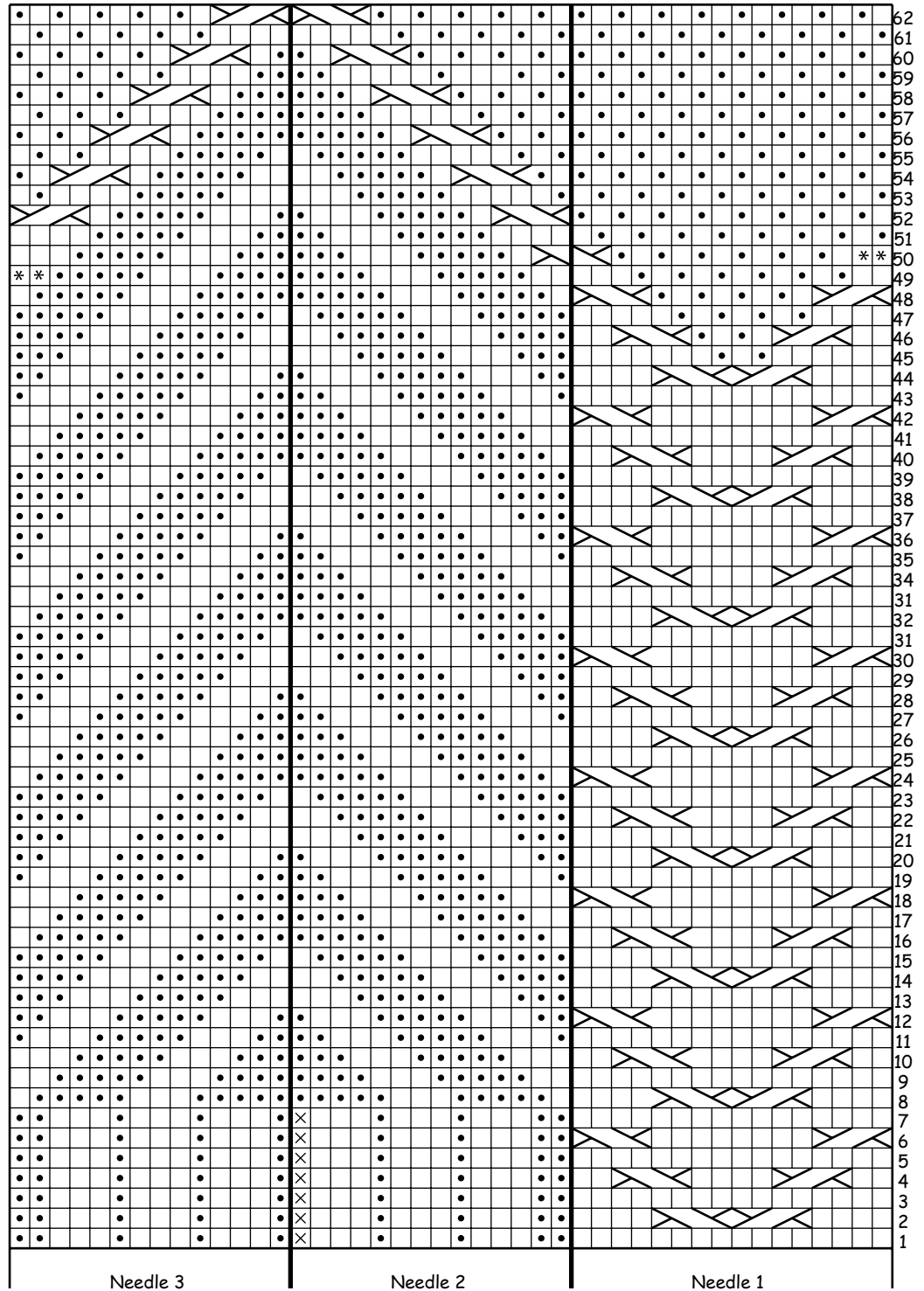
## ABBREVIATIONS:

AH	armhole	dec	decrease	ndl(s)	needle(s)	rnd	round	WS	wrong side
beg	begin(ning)	est	established	p	purl	RS	right side	yo	yarn over
BH	buttonhole	inc	increase	pm	place marker	sl	slip st		
BO	bind off	k	knit	rem	remaining	st(s)	stitch(es)		
cn	cable needle	k1b	k 1 in back of st	rep	repeat	st st	stockinette st		
CO	cast on	meas	measures	rev st st	reverse st st	tog	together		

# #378 Miss Priss Cabled Headband and Mittens

page 3 of 3

## Mitten Chart



### Key

□ K1 (RS), P1 (WS)

• P1 (RS), K1 (WS)

↘ ↙ C4F- Sl 2 sts onto cn and hold to front of work. K2, then k2 from cn.

↘ ↙ C4B- Sl 2 sts onto cn and hold to back of work. K2, then k2 from cn.

× No stitch

\* Special instruction

### Headband Chart

